

TIC BRNO



THIS IS: Coffee in Brno



THIS IS: Coffee in Brno

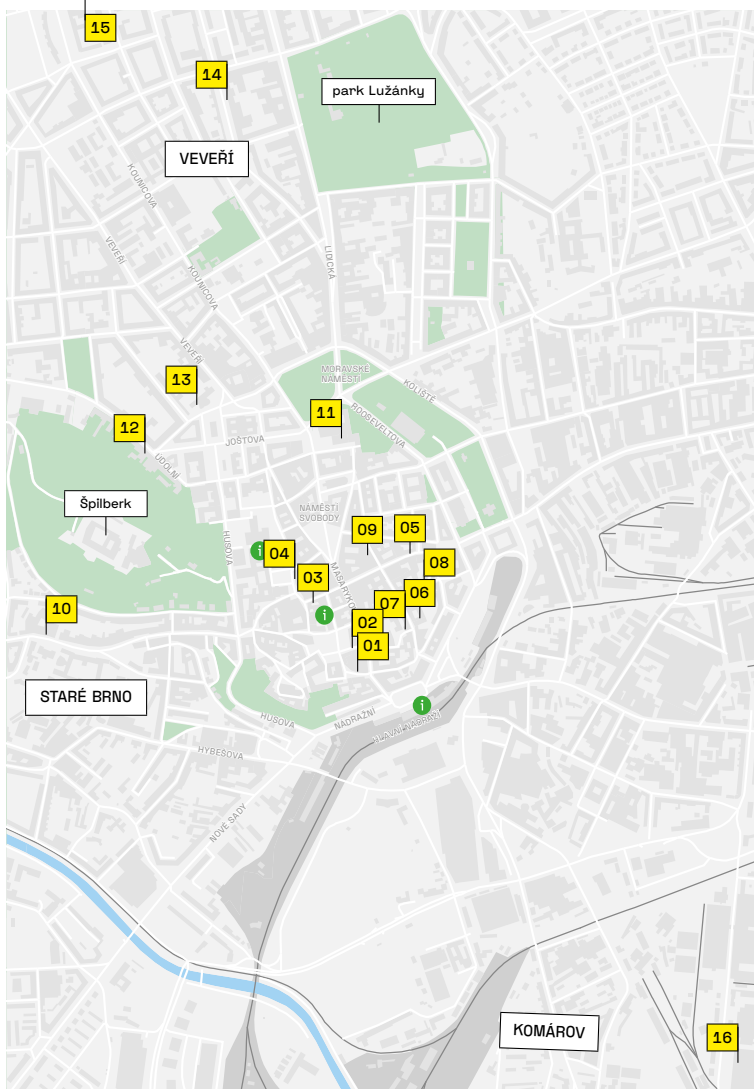
The café and coffee culture in Brno dates back a very long time. After all, the very first café in what is today the Czech Republic was opened in 1702 in Brno by a man named Ahmed from Turkey, and only several years later another Turk opened the first café in Prague. Of course, the lifestyle of the people of Brno has changed significantly since then, just like the taste and the way coffee is prepared, but the relationship between the city and coffee, as well as the desire of locals to spend time in cafés have remained the same.

After traveling through a lot of Europe and visiting hundreds of cafés of all types across the continent, I can honestly say that in Brno you'll experience the European elite. The baristas from Brno have been winning international competitions and the concepts of their cafés draw visitors from the Czech Republic as well as abroad. A number of coffee-roasting plants have recently been founded in Brno, helping create the perfect environment for new businesses with good coffee at their centre.

Yet it is still necessary to search for the right places to go – the places that love premium coffee and like to share its story with their guests. And that is precisely what you will find in this guide. Whether you decide for a café nestled into the industrial grounds of a former freezing plant, a historical building from the 17th century or right next to a popular park, you can rest assured that you'll get a cup of well-prepared, quality coffee at an interesting place and a bite to eat as a bonus.

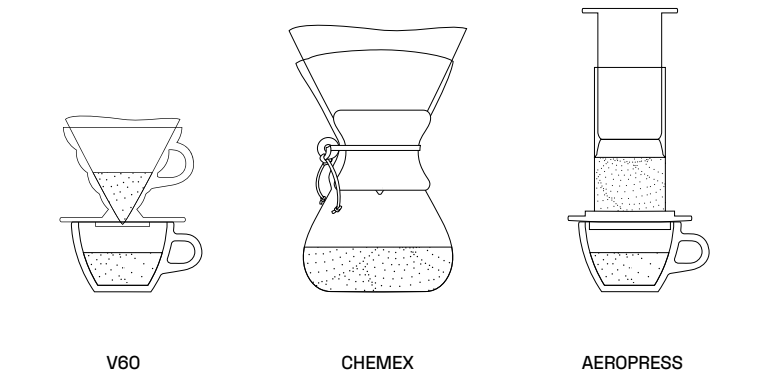
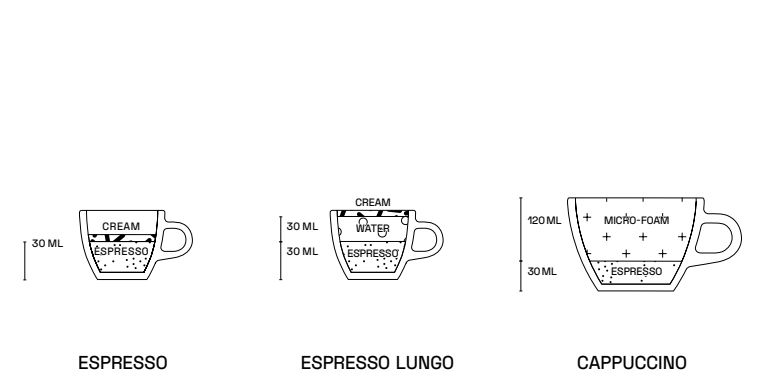
I always recommend exploring a city through its cafés, as they are scattered all over the city as points of reference and often lead you to interesting alleys and spots you'd have otherwise missed. You'll not only relax and refresh yourself, but also experience a unique atmosphere of the entire city. And I believe Brno is simply begging to be explored this way.

Aleš Pospíšil, Chief Editor
of European Coffee Trip



ESPRESSO-BASED COFFEE

ALTERNATIVE COFFEE BREWING



01

MONOGRAM ESPRESSO BAR
Kapucinské náměstí 310/12

Adam Neubauer has already won the Barista of the Year award three times. He moved from Prague to Brno and opened a café downtown in a historical building at Capuchin Square (Kapucinské náměstí). After long preparations he created his own unique Monogram. A café with a simple and clean design, dominated by light wood and polished concrete, where you can take a look at what the art of being a barista is all about. Sit down at the

bar, or even behind the bar, and watch the barista prepare your coffee with precision. Two coffee grinders are always ready to prepare coffee beans from England's Has Bean coffee-roasting plant.

MON—FRI	8.30AM—6.30PM
www.monogramespressobar.cz	



02

CAFÉ MOMENTA
Zelný trh 314/2

Located in a corner building directly on the Vegetable Market (Zelný trh), Momenta Café invites you to enter. On top of the spacious and stylish seating inside, on warm days you can sit outside and enjoy an exceptional view of the busy square. Coffee from La Bohème Café and various guest coffee-roasting plants are ready in two grinders. In addition, you can order filtered

coffee, either as hot or cold brew. However, much of Momenta's fame has come from its sweet delicacies! For a long time, its owner Taňa Kmenta used to prepare various pies and biscuits herself or brought them back from France, but in 2015 she opened a café to make her dream come true.

MON—SUN	8AM—10PM
www.cafe-momenta.cz	



03

CAFE MITTE
Panská 362/11

Cafe Mitte is a cosy place in the very heart of Brno located in a historical building from 1659, one of the few to survive the great urban renewal at the turn of the 20th century. Despite being one of the smallest cafés in Brno, it's among the well-known local places serving premium coffee, whose atmosphere continues to attract more customers every day. Its intimate feel simply invites the guests and baristas to start a conversation, its wide range over coffee from around

the world, produced by the Doubleshot roasting plant, being a more than suitable topic. Cafe Mitte is not afraid to mix coffee with other ingredients; in winter, you can enjoy its Irish coffee and in summer you can refresh yourself with its espresso & tonic.

MON—SAT	8AM—8PM
SUN	9AM—8PM
www.cafemitte.com	



04

SKØG URBAN HUB
Dominikánské nám. 187/5

SKØG means forest in Norwegian, and Scandinavian design and lifestyle are the idea behind this café at Dominican Square (Dominikánské náměstí). High ceilings, white walls, and crackling sounds welcome you as you enter and step on to its wooden floor. They roast their own coffee here under the Rusty Nails Coffee Roasters brand and for a long time the roasting used to take place directly in the café. Also, you can have an

espresso or filtered coffee here and always enjoy coffee imported from all over the world while the experienced staff will be happy to help you to choose the right type for you. This peaceful café turns into a busy bar in the evening where you can have wine, beer or a cocktail made by a local bartender.

MON—THU	8AM—1AM
FRI	8AM—2AM
SUN	noon—10PM
www.skog.cz	



COFFEE FUSION
Jánská 460/25

When you are close to Malinovský Square (Malinovského náměstí) at Jánská Street, make sure to stop by Coffee Fusion. Its owner and head barista Michal Kocman created a place here that continues in the tradition of interwar cafés, with services and quality of coffee to meet modern standards. You can always choose from two types of coffee prepared as espresso and several others for filtered coffee. In summer, you can sit and

relax outside and enjoy what's called a cold drip, prepared in a limited volume the night before. "You can discover the whole world in a cup of coffee," as a favourite quote of Michal Kocman goes.

MON—FRI	9 ^{AM} —8 ^{PM}
☛ COFFEE FUSION	



V MELOUNOVÉM CUKRU
Františkánská 494/17

The café with this sweet name (In Watermelon Sugar) is located in an alley perpendicular to Josefská Street. This remarkable world, inspired by a book by Richard Brautigan of the same name, was created by Vendula Smékalová in her café filled with the aroma of fresh coffee and excellent cakes. They are very proud of their cakes here and each of your visits will become an adventure of

discovering new tastes. You can choose from two types of coffee produced by major European roasting plants and there's no need to stick to classic espresso or cappuccino only, as you can ask for a raspberry puree cappuccino with coconut milk. Yum!

MON—FRI	8 ^{AM} —9 ^{PM}
SAT	9 ^{AM} —8 ^{PM}
SUN	10 ^{AM} —8 ^{PM}
☛ kavarnacukrirodinky	



CAFÉ PLACZEK
Minoritská 470/4

Café Placzek was opened on Minoritská Street, in the very downtown of the city, in a house built in 1928 which was successfully renovated in 2013. Its name refers to a traditional Brno family of merchants and its interior and materials used remind one of the first half of the 20th century. Its two coffee grinders give you a choice of a coffee blend from Coffeespot and single-origin coffee from major Czech roasting plants. Also,

Café Placzek prepares its own breakfast, pies, desserts, sandwiches, and salads.

MON—FRI	7.30 ^{AM} —9 ^{PM}
SAT—SUN	7.30 ^{AM} —8 ^{PM}
www.cafeplaczek.cz	



KAFEC
Orlí 517/22

First, people used to come to Kafec for waffles, then for breakfast, and – last but not least – a cup of excellent coffee prepared from Czech roasting plants. Gradually, its owner Tomáš Konečný turned Kafec into a place where you can get familiar with some premium coffee and introduced a number of varied ways to offer coffee to the general public. After moving from Veverí Street to the city centre, the café

expanded and now occupies three storeys in Orlí Street and offers pleasant outdoor seating in the courtyard in summer.

MON—FRI	8 ^{AM} —8 ^{PM}
SAT—SUN	9 ^{AM} —8 ^{PM}
www.kafec.cz	

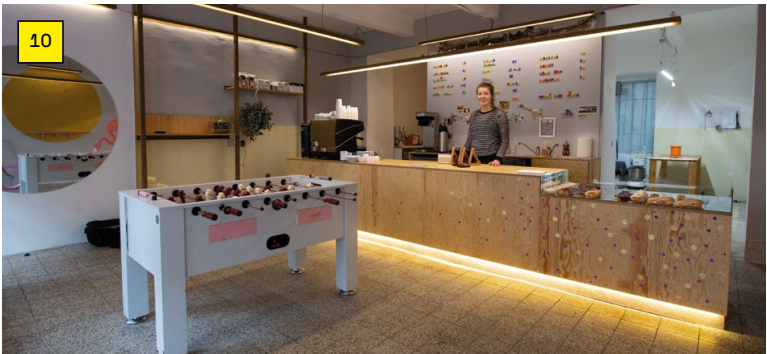


SPOLEK
Orlí 517/22

Spolek was one of the first cafés in Brno to serve premium coffee and has succeeded in maintaining its quality and style for years. A passage leading from Orlí Street will take you to the two-storey café which offers coffee in various forms from the Doubleshot roasting plant. You can order espresso or cappuccino as usual or a cup of filtered coffee prepared using a French Press as well

as espresso with cloves and cinnamon, the local speciality. Also, people come here for excellent meals, and besides lunches and soups on daily offer you can enjoy various toasts and salads.

MON—FRI	9 ^{AM} —10 ^{PM}
SAT—SUN	10 ^{AM} —10 ^{PM}
spolek.net	



KAFE & KOBLIHA
Pekařská 433/68

Whether you come to Pekařská Street feeling like having a coffee or a doughnut, you can be sure that both will be just excellent. Marek Richtar, the main doughnut maker, gets up early in the morning to bake and often sell out the doughnuts even before the place closes. Every month the Kafe & Kobliha crew prepares a new range of doughnuts and coffee from various European roasting plants.

espresso made from Colombian coffee beans, prepared by the Swedish roasting plant, Koppi. There aren't too many chairs to sit in, but you can burn some of the calories playing foosball which is so much more than a decoration here!

MON—FRI	8 ^{AM} —6 ^{PM}
SAT—SUN	noon—6 ^{PM}
☛ KafeAKoblihaBrno	

You can get inspired by the local 3x3: black-berry & bourbon & basil doughnut with an



CAFÉ MORGAL
Moravské náměstí 680/1A

Morgal is a gallery café located at the Governor's Palace (Mistodržitelský palác) at Moravian Square (Moravské náměstí). Even though its name sounds like something from the world of J. R. R. Tolkien, it is a combination of abbreviations of MORavská GALerie (Moravian Gallery) which it shares this building with. The impression from the beautifully designed interior of the café, with some

exposed Baroque frescoes and manually decorated TON chairs, gets even better in the palace courtyard, a peaceful oasis in the very centre of Brno. You can enjoy coffee from Berlin's Bonanza roasting plant, and even try some Moravian wines or local meals.

MON—SUN	10 ^{AM} —1 ^{AM}
www.morgal.cz	



CAFÉ ATLAS
Žerotínovo náměstí 533/6

Café Atlas would easily win the award for the most colourful café in Brno. Designed by architect Martin Hrdina, its interior is dominated by a 13-metre wide wallpaper consisting of over 400 illustrations from old atlases. Located in the left wing of the Břetislav Bakala Hall (Sál Břetislava Bakaly) on Žerotín Square (Žerotínovo náměstí), it offers premium coffee produced by the Rebelbean roasting plant and a wide range of gluten-free, vegetarian and vegan meals.

Also, it's a bit of a paradise for freelancers who spend long hours on their computers at a large shared table and get energized by local coffee and sunbeams penetrating through the huge windows.

MON—SAT	8 ^{AM} —midnight
SUN	2 ^{PM} —10 ^{PM}
www.cafeatlas.cz	



THE ROSES BEER & COFFEE
Purkyňova 2415/116

Top-quality beer and premium coffee are the prides of this place in Královo Pole municipality, conveniently located at the Červinkova stop frequented by crowds of students and employees of companies based in Technological Park. The Růžička brothers took over an old dive and turned it into a pleasant place to meet over a morning cup of coffee and breakfast or a beer and a burger in the evening. The Roses serves coffee from

the well-known Has Bean English roasting plant, as both espresso and filtered coffee.

MON—FRI	8 ^{AM} —11 ^{PM}
☛ TheRosesBar	



MEZZANINE CAFÉ
Údolní 435/15

A long-standing star among Brno cafés, Mezzanine Café on Údolní Street has been offering good-quality coffee to its guests since 2008. Using three grinders, they offer a blend from the Filicori Zecchini roasting plant in Bologna, premium coffee from Czech roasting plants, and filtered coffee. And the Mezzanine Café is where you can experience a bit of Italy especially in the morning, as the baristas have their hands

full at the coffee maker and espressos and cappuccinos are quickly brought to the customers, often together with fresh croissants and pies from the local Artisan Bakery.

MON—FRI	7 ^{AM} —11 ^{PM}
SAT—SUN	10 ^{AM} —10 ^{PM}
www.cafe-mezzanine.cz	



PUNKT.
Bayerova 577/7

Punkt. is a popular local spot on Bayerova Street, not far from Lužánky Park. Here, Klára Švandová and Martin Dutkiewicz created a cosy place full of life from the early morning till late into the night, with guests gradually forgetting about coffee and switching to wine or beer. You can enjoy coffee from selected European roasting plants, but most often by Fiftybeans from

Brno. And since coffee goes well with something sweet, Punkt. attracts customers and friends to come regularly and taste its pies, cakes, and desserts.

MON—FRI	8 ^{AM} —10 ^{PM}
SAT—SUN	1 ^{PM} —8 ^{PM}
☛ punkt.cafe	



INDUSTRA COFFEE
Masná 27/9

What used to be a freezing plant on Masná Street is now a multicultural platform named Industra. The hardships you suffer during the long journey will be more than compensated by its excellent coffee, fresh desserts, and excellent atmosphere at the premises. Having returned from UK, Petra Střelecká and Adam Obrátil took over the café. They prepare coffee from Square Mile, a roasting plant in London, as a kind of tribute to their stay in England. Industra Coffee has quite

unusual opening hours – closed on Mondays and Tuesdays and open on the rest of the working days only in the afternoon. This way, however, the staff save enough energy for the weekends when their well-known brunches are served.

WED—SAT	1 ^{PM} —7 ^{PM}
SUN	10 ^{AM} —7 ^{PM}
www.industracoffee.cz	

Photo: Aleš Pospíšil

Cover photo: INDUSTRA COFFEE

Text: Aleš Pospíšil

The listed opening hours are
accurate at the time of publication.

TIC BRNO, p.o. is financially supported
by the City of Brno

2018

www.ticbrno.cz